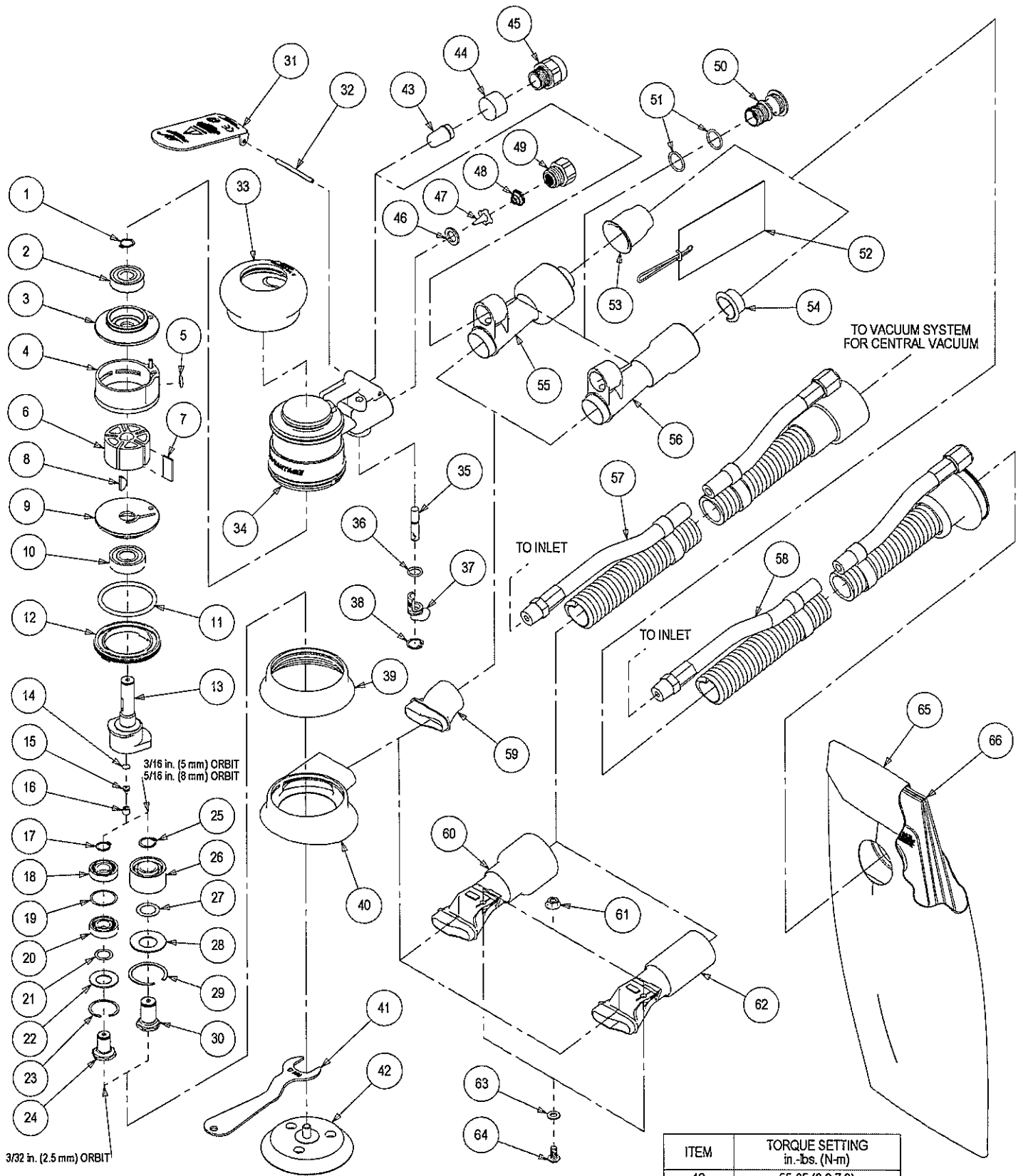


# Parts Page



3/32 in. (2.5 mm) ORBIT

ITEM	TORQUE SETTING in.-lbs. (N-m)
12	55-65 (6.2-7.3)
45	16-20 (1.8-2.6)
49	60-72 (6.8-8.1)
50	36-48 (4.1-5.4)
64	30-35 (3.4-4.0)

# Parts List

Item	Part No.	Description	Qty.
1	AVA0040	EXTERNAL RETAINING RING	1
2	AVA0021	BEARING - 2 SHIELDS	1
3	AVA0065	REAR ENDPLATE	1
4	AVA0067	CYLINDER ASSEMBLY	1
5	AVA0042	O-RING	1
6	AVB0005	ROTOR	1
7	AVA0010	VANE	5
8	AVA0041	WOODRUFF KEY	1
9	AVA0064	FRONT ENDPLATE	1
10	AVA0019	BEARING - 2 SHIELDS	1
11	AVA0045	O-RING	1
12	AVA0001	LOCK RING	1
13	AVB0084	3 x 3/32 in. (2.5 mm) ORBIT SHAFT BALANCER	1
	AVB0309	3 x 3/16 in. (5.0 mm) ORBIT SHAFT BALANCER	1
	AVB0349	3 x 5/16 in. (8.0 mm) ORBIT SHAFT BALANCER	1
14	AVA0122	FILTER	1
15	AVA0121	DUCKBILL CHECK VALVE	1
16	AVA0120	VALVE RETAINER	1
17	AVA0107	RETAINING RING	1
18	AVA0162	BEARING - NO SEAL/SHIELDS	1
19	AVA0196	SPACER	1
20	AVA0161	BEARING - 1 SEAL	1
21	AVA0108	SHIM	1
22	AVA0126	BELLEVILLE WASHER	1
23	AVA0177	RETAINING RING	1
24	AVB0083	SPINDLE	1
25	AVA0090	RETAINING RING	1
26	AVA0938	DOUBLE ROW ANGULAR CONTACT BEARING - 1 SEAL	1
27	AVA0016	SPACER	1
28	AVA0017	BELLEVILLE WASHER	1
29	AVA0018	RETAINING RING	1
30	AVB0312	SPINDLE	1
31	AVA0332	THROTTLE LEVER 3/32 in. (2.5 mm) ORBIT 12,000 RPM ROS	1
	AVA0070	THROTTLE LEVER 3/16 in. (5 mm) ORBIT 12,000 RPM ROS	1
	AVA1712	THROTTLE LEVER 5/16 in. (8 mm) ORBIT 12,000 RPM ROS	1
32	AVA0031	LEVER SPRING PIN	1
33	AVB0007	2 1/2 in. (65 mm) GRIP	Optional
	AVB0008	2 3/4 in. (69 mm) GRIP	1
	AVB0009	3 in. 75 mm) GRIP	Optional
34	AVA0230	HOUSING	1
35	AVA0008	VALVE STEM ASSEMBLY	1
36	AVA0043	O-RING	1
37	AVB0014	SPEED CONTROL	1
38	AVA0039	INTERNAL RETAINING RING	1
39	AVC0046	NON-VAC SHROUD	1
40	AVC0047	SuperVAC SKIRT - 3/32 in. (2.5 mm) ORBIT	1
	AVC0243	SuperVAC SKIRT - 3/16 in. (5 mm) & 5/16 in. (8 mm) ORBIT	1
41	AVA0146	17 mm WRENCH	1
42	N/A	1 Back-up Pad supplied with each tool (type determined by model)	1
43	AVA0062	INTERNAL MUFFLER	1
44	AVA0068	MUFFLER INSERT	1
45	AVA0166	MUFFLER HOUSING	1
46	AVA0009	VALVE SEAT	1
47	AVA0007	VALVE	1
48	AVA0014	VALVE SPRING	1
49	AVA0013	INLET BUSHING ASSEMBLY	1
50	AVA0006	SGV RETAINER	1
51	AVA0044	O-RING	2
52	AVA0857	3/4 in./19 mm HOSE SEAL TAG W/INSTRUCTION	Optional
	AVA0933	1 in./28 mm HOSE SEAL TAG W/INSTRUCTION	1
53	AVA0778	1 in./28 mm HOSE SEAL	1
54	AVA0854	3/4 in./19 mm HOSE SEAL	Optional
55	AVA0410	ASSEMBLY FOR 1 in./28 mm HOSE SuperVAC SGV SWIVEL EXHAUST FITTING	1
56	AVA0409	ASSEMBLY FOR 3/4 in./19 mm HOSE SuperVAC SWIVEL EXHAUST FITTING	Optional
57	AVA0300	Ø 3/4 in. VAC HOSE TO Ø 3/4 in. x 1 in./28 mm ADAPTER COUPLING AND AIRLINE ASSM	1
58	AVA0411	Ø 3/4 in. VAC HOSE TO DOUBLE BAG FITTING AND AIRLINE ASSY	Optional
	AVA0412	Ø 1 in. VAC HOSE TO DOUBLE BAG FITTING AND AIRLINE ASSY	1
59	AVC0108	SuperVAC SGV SKIRT/SHROUD ADAPTER	1
60	AVA0099	ROS SuperVAC™ CV 1 in./28 mm SWIVEL EXHAUST ASSEMBLY	Optional
61	AVA0048	FLANGED NUT	1
62	AVA0205	ROS SuperVAC CV 3/4 in. SWIVEL EXHAUST ASSEMBLY	1
63	AVA0047	WASHER	1
64	AVA0769	HEX SOCKET BUTTON HEAD MACHINE SCREW	1
65	AVA0468	VACUUM BAG	1
66	AVA0470	VACUUM BAG INSERT	1