

# Hydraulic Rotary Hammer Drill

Type 2 2406 0010

Techn. Doc. No. 262



Illustration can differ from the original

## Repair Manual and Spare Parts List

## Repair

Disassemble the tool until only if you are skilled and have the appropriate technical knowledge. Problems could be in the hydraulic power supply, the gearbox module, or the power and control (rear) module. Then only disassemble the tool as necessary to repair as required.

Keep contaminants such as dirt and grit away from the internal parts at all times.

Always determine and correct the cause of the problem prior to re-assemble. Further wear and tool failure can result, if the original cause is not corrected.

### Prior to disassembly

Clean the exterior of the tool.

Make sure to have all new seals so they can be replaced during reassembly. Note the orientation of seals before removal. Install new seals in the same position as the original seals.

**Note:** For orientation of the parts refer to the sectional drawing and parts list located at the end of this manual.

### Re-assembly

Before starting reassembly check all parts for wear and replace them if necessary. Wear parts are in particular O-rings, radial shaft seals and bearings.

We recommend changing the grease in the gear housing after 300 hours of operation. Use a special-purpose gear grease only:

|                                  |                 |
|----------------------------------|-----------------|
| Consistency class<br>(DIN 51818) | 2               |
| Saponification type              | Lithium         |
| Worked penetration               | 265 to 295      |
| Temperature range                | -25°C to +125°C |

The proper quantity of grease is very important from the point of good lubrication and low heat generation.

### Spare Parts

Only original spare parts may be used. There is no warranty for damages and liability is disclaimed, if non-original spare parts and accessories are used.



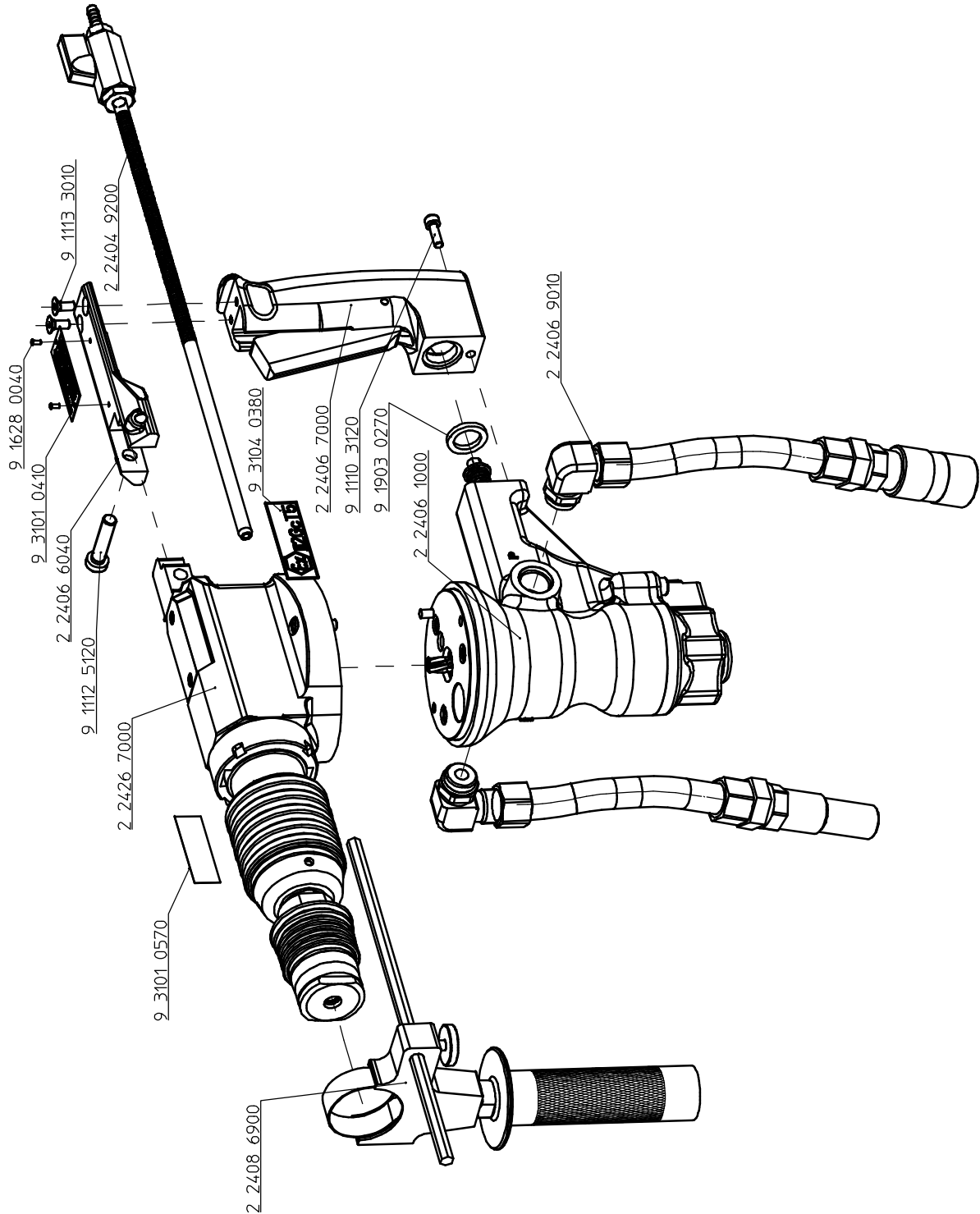
### Spare Part List

Description:

**Hydraulic Rotary Hammer Drill**

Part and drawing number:

**2 2406 0010**



## Spare Parts List

Description:

**Output unit, assy.**

Part and drawing number:

**2 2426 7000**

| Item | Qty. | Description           | Part and Drawing no. |   | Remarks |
|------|------|-----------------------|----------------------|---|---------|
| 401  | 1    | Gearbox housing       | 2 2404 4010          |   |         |
| 402  | 1    | Tension sleeve        | 2 2404 8100          |   |         |
| 403  | 1    | Sliding sleeve        | 2 2404 7130          |   |         |
| 404  | 1    | Bushing               | 2 2404 7140          |   |         |
| 405  | 1    | Feather key           | 9 1506 9240          |   |         |
| 407  | 1    | Shifter sleeve, assy. | 2 2404 8940          |   |         |
| 408  | 1    | Cylinder, assy.       | 2 2404 8920          |   |         |
| 409  | 1    | Impact piston         | 2 2404 4540          |   |         |
| 410  | 1    | Nut                   | 2 2404 8240          |   |         |
| 411  | 1    | End piece             | 2 2404 7010          |   |         |
| 412  | 1    | Bevel gears           | 2 2404 4400          |   |         |
| 413  | 1    | Piston                | 2 2404 4520          |   |         |
| 414  | 1    | Piston pin, assy.     | 2 2404 4960          |   |         |
| 415  | 1    | Cover                 | 2 2404 4090          |   |         |
| 416  | 1    | Crankshaft            | 2 2404 4550          |   |         |
| 417  | 2    | Roller                | 2 2404 4570          |   |         |
| 418  | 1    | Gear pinion           | 2 2404 4040          |   |         |
| 419  | 1    | Bushing               | 2 2404 8080          |   |         |
| 420  | 1    | Output shaft          | 2 2404 8090          |   |         |
| 421  | 1    | Sealing               | 2 2404 4190          |   |         |
| 422  | 1    | Output unit housing   | 2 2404 8010          |   |         |
| 423  | 1    | Connecting rod        | 2 2426 4530          |   |         |
| 424  | 1    | Shaft seal            | 9 1905 0540          | * |         |
| 425  | 1    | Slip clutch, assy.    | 2 2404 4920          |   |         |
| 426  | 1    | O-ring                | 9 1901 3500          | * |         |
| 427  | 2    | O-ring                | 9 1901 3290          | * |         |
| 428  | 1    | O-ring                | 9 1921 2140          | * |         |
| 429  | 1    | Pressure spring       | 9 1803 4190          |   |         |
| 430  | 1    | Feather key           | 9 1501 1140          |   |         |
| 431  | 4    | Roller                | 2 2404 4580          |   |         |
| 432  | 1    | O-ring                | 9 1901 5940          | * |         |

## Spare Parts List

Description:

**Output unit, assy.**

Part and drawing number:

**2 2426 7000**

| Item | Qty. | Description                          | Part and Drawing no. |   | Remarks |
|------|------|--------------------------------------|----------------------|---|---------|
| 433  | 1    | Scraper                              | 9 1908 1780          |   |         |
| 434  | 1    | Pressure spring                      | 9 1807 0210          |   |         |
| 435  | 1    | Feather key                          | 9 1501 1040          |   |         |
| 436  | 1    | Needle sleeve                        | 9 1014 0450          | * |         |
| 437  | 1    | Needle sleeve                        | 9 1014 0010          | * |         |
| 438  | 2    | Socket head screw                    | 9 1112 2020          |   |         |
| 439  | 1    | Grooved ball bearing                 | 9 1004 0010          | * |         |
| 440  | 1    | Snap ring                            | 9 1703 0080          |   |         |
| 441  | 1    | O-ring                               | 9 1901 3270          | * |         |
| 442  | 1    | Snap ring                            | 9 1703 0130          |   |         |
| 443  | 1    | Grooved ball bearing                 | 9 1003 0050          | * |         |
| 444  | 1    | Grooved ball bearing                 | 9 1003 0020          | * |         |
| 445  | 1    | Grooved ball bearing                 | 9 1001 0070          | * |         |
| 446  | 1    | Sealing ring                         | 9 1913 0730          | * |         |
| 448  | 1    | Snap ring                            | 9 1702 0050          |   |         |
| 449  | 1    | Snap ring                            | 9 1702 0040          |   |         |
| 450  | 1    | O-ring                               | 9 1901 5970          | * |         |
| 451  | 2    | Socket head-screw                    | 9 1110 4030          |   |         |
| 452  | 2    | Sealing U-shape                      | 9 1908 1930          |   |         |
| 453  | 2    | Sealing U-shape                      | 9 1908 1950          | * |         |
| 454  | 1    | O-ring                               | 9 1901 2610          | * |         |
| 455  | 1    | Sliding bearing                      | 9 1029 0130          | * |         |
| 456  | 1    | Shaft sealing ring                   | 9 1905 1580          | * |         |
| 457  | 1    | Snap ring                            | 9 1702 0020          |   |         |
| 458  | 1    | O-ring                               | 9 1901 4070          | * |         |
|      |      |                                      |                      |   |         |
|      |      | * Wear parts to be stored in case of |                      |   |         |
|      |      | continuous use!                      |                      |   |         |
|      |      |                                      |                      |   |         |
|      |      |                                      |                      |   |         |
|      |      |                                      |                      |   |         |

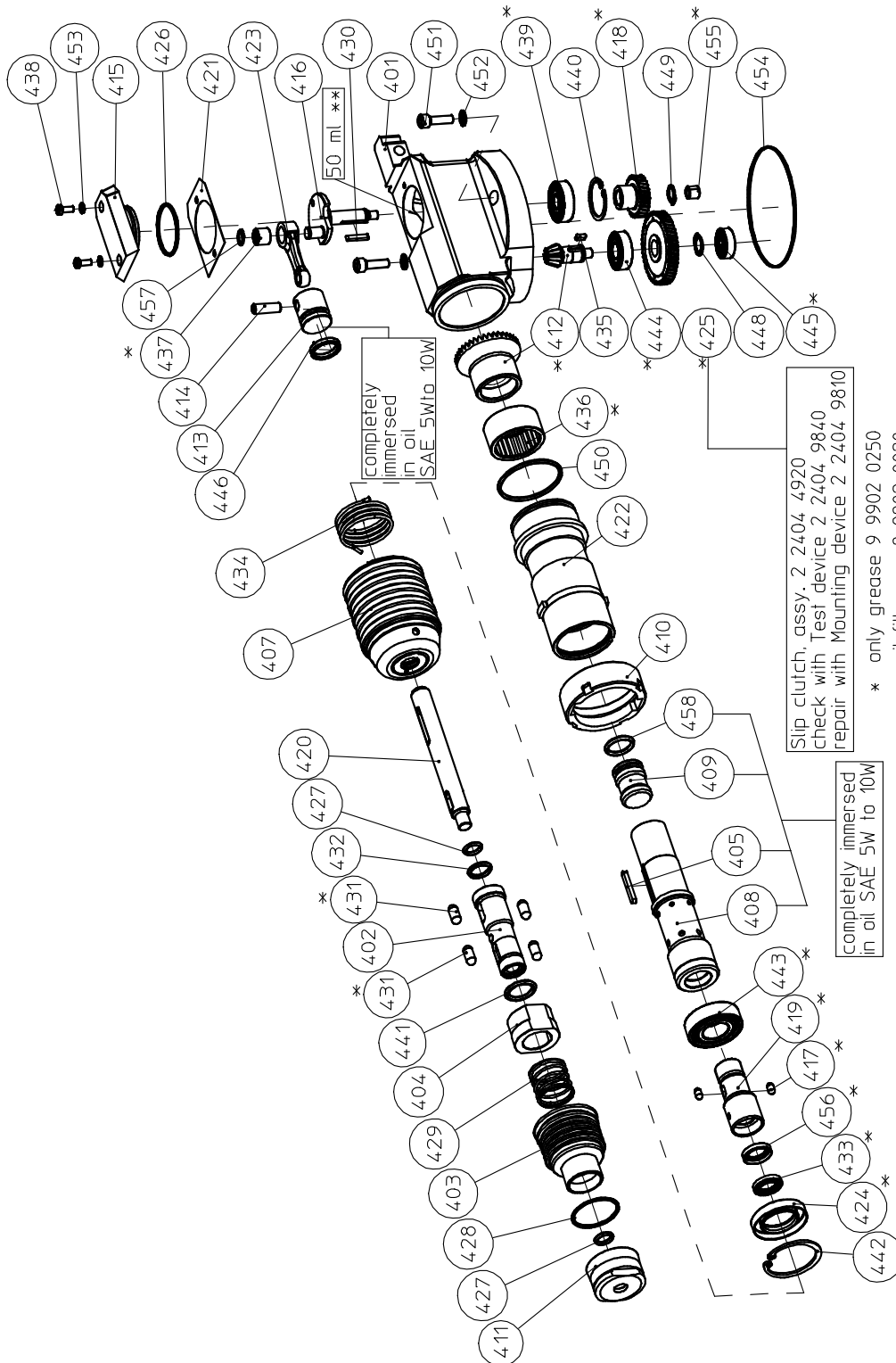
### Spare Parts List

Description:

**Output unit, assy.**

Part and drawing number:

**2 2426 7000**



## Spare Part List

Description:

**Hydraulic Motor**

Part and drawing number:

**2 2406 1000**

| Item | Qty. | Description           | Part and drawing no. |   | Remarks           |
|------|------|-----------------------|----------------------|---|-------------------|
| 100  | 1    | Hydraulic motor       | 9 5501 0130          |   | with item 104-114 |
| 104  | 1    | Shaft sealing ring    | 9 1925 0450          | * |                   |
| 106  | 1    | Axial disc            | 9 1024 0360          | * |                   |
| 107  | 1    | Axial thrust bearing  | 9 1024 0370          | * |                   |
| 108  | 1    | Spacer                | 9 5501 0040          |   |                   |
| 109  | 1    | Carrier               | 9 5501 0140          |   |                   |
| 110  | 1    | Drive shaft           | 9 5501 0150          |   |                   |
| 111  | 3    | O-ring                | 9 1921 1240          | * |                   |
| 112  | 1    | Cover disc            | 9 5501 0070          |   |                   |
| 113  | 1    | Geroler element       | 9 5501 0160          |   |                   |
| 114  | 1    | Rotary slide          | 9 5501 0090          |   |                   |
| 115  | 1    | Bushing               | 9 1029 0530          |   |                   |
| 151  | 1    | Housing, assy.        | 2 2406 1910          |   | with item 115     |
| 152  | 1    | Motor cover, assy.    | 2 2407 1930          |   | with item 172     |
| 153  | 1    | Centring cover, assy, | 2 2406 1940          |   |                   |
| 154  | 1    | Pinion shaft          | 2 2406 4170          |   |                   |
| 155  | 1    | Gear rim              | 2 2406 4020          |   |                   |
| 156  | 1    | Pinion                | 3 8837 4360          |   |                   |
| 157  | 2    | Planet carrier, assy. | 3 8837 4920          |   |                   |
| 158  | 6    | Planet wheel          | 3 8837 4140          |   |                   |
| 159  | 6    | Needle cage           | 9 1015 0790          |   |                   |
| 160  | 2    | Grooved ball bearing  | 9 1001 0050          | * |                   |
| 161  | 1    | Washer                | 2 2406 4150          |   |                   |
| 162  | 1    | Snap ring             | 9 1702 0030          |   |                   |
| 163  | 1    | Snap ring             | 9 1703 0040          |   |                   |
| 164  | 2    | Cylinder pin          | 9 1619 1350          |   |                   |
| 165  | 3    | Socket head screw     | 9 1110 4010          |   |                   |
| 166  | 3    | Gasket                | 9 1903 1250          | * |                   |
| 167  | 2    | Cylinder pin          | 9 1619 0450          |   |                   |
| 168  | 1    | Driver shaft          | 2 2406 1050          |   |                   |
| 169  | 5    | Socket head screw     | 9 1110 4160          |   |                   |



## Spare Part List

Description:

**Hydraulic Motor**

Part and drawing number:

**2 2406 1000**

| Item | Qty. | Description                                    | Part and drawing no. |   | Remarks      |
|------|------|--|----------------------|---|--------------|
| 170  | 2    | O-ring   | 9 1921 4410          | * |              |
| 171  | 2    | Plug   | 9 3401 1060          | * |              |
| 172  | 2    | Threaded pin                                   | 9 1140 5080          |   |              |
| 173  | 2    | Socket head screw                              | 9 1110 4030          |   |              |
| 301  | 1    | Governor sleeve                                | 2 1317 3310          |   |              |
| 302  | 1    | Glate  | 5 1220 3050          |   |              |
| 303  | 1    | Washer   | 9 3302 0030          |   |              |
| 304  | 1    | Pressure spring                                | 9 1803 3590          |   |              |
| 305  | 1    | Locking washer                                 | 9 1706 0140          |   |              |
|      | 1    | Valve inert, assy.                             | 2 1317 3300          |   | item 307-326 |
| 307  | 1    | Snap ring                                      | 9 1703 0260          |   |              |
| 308  | 1    | Socket head screw                              | 9 1110 2090          |   |              |
| 309  | 1    | Washer   | 9 3302 0150          |   |              |
| 310  | 1    | Governor piston valve                          | 2 1317 3320          |   |              |
| 311  | 1    | Spring plate                                   | 2 1317 3070          |   |              |
| 312  | 1    | Slide  | 2 1317 3110          |   |              |
| 314  | 1    | Sleeve   | 2 1317 3090          | * |              |
| 315  | 1    | Guide  | 2 1317 3100          |   |              |
| 317  | 1    | Pressure spring                                | 9 1803 1700          |   |              |
| 318  | 1    | Locking washer                                 | 9 1706 0180          |   |              |
| 319  | 1    | O-ring   | 9 1901 3290          | * |              |
| 320  | 1    | O-ring   | 9 1901 9800          | * |              |
| 321  | 1    | O-ring   | 9 1901 2550          | * |              |
| 322  | 1    | Threaded pin                                   | 9 1148 3030          |   |              |
| 323  | 1    | O-ring   | 9 1901 6020          | * |              |
| 326  | 1    | O-ring   | 9 1901 2080          | * |              |
|      |      |  |                      |   |              |
|      |      |  |                      |   |              |
|      |      | *Wear parts to be stored in case of continuous |                      |   |              |
|      |      | use  |                      |   |              |

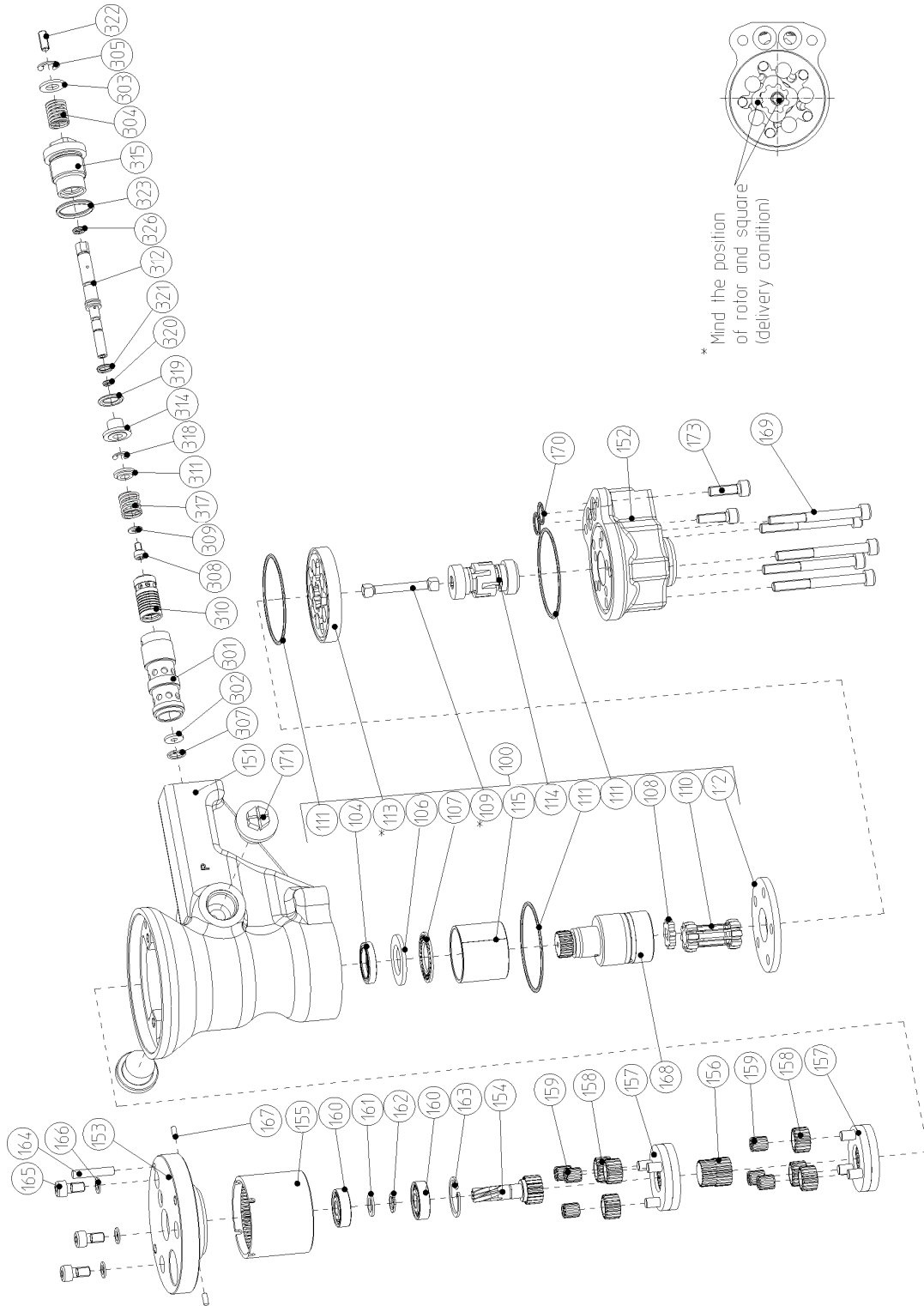
## Spare Part List

Description:

**Hydraulic Motor**

Part and drawing number:

**2 2406 1000**



| <b>Spare Parts List</b>     |      |                 |                          |         |
|-----------------------------|------|-----------------|--------------------------|---------|
| Description:                |      |                 | Part and drawing number: |         |
| <b>Second handle, assy.</b> |      |                 | <b>2 2408 6900</b>       |         |
| Item                        | Qty. | Description     | Part and Drawing no.     | Remarks |
| 140                         | 1    | Handle          | 2 2408 6310              |         |
| 141                         | 1    | Holder          | 2 2408 6330              |         |
| 142                         | 1    | Tensioning belt | 7 1403 6520              |         |
| 143                         | 1    | Hammer screw    | 9 1164 0740              |         |
| 145                         | 1    | Knurled screw   | 9 1121 9030              |         |
| 146                         | 1    | Depth stop      | 2 1345 6550              |         |
|                             |      |                 |                          |         |
|                             |      |                 |                          |         |
|                             |      |                 |                          |         |
|                             |      |                 |                          |         |
|                             |      |                 |                          |         |
|                             |      |                 |                          |         |
|                             |      |                 |                          |         |
|                             |      |                 |                          |         |
|                             |      |                 |                          |         |
|                             |      |                 |                          |         |
|                             |      |                 |                          |         |
|                             |      |                 |                          |         |
|                             |      |                 |                          |         |
|                             |      |                 |                          |         |
|                             |      |                 |                          |         |
|                             |      |                 |                          |         |
|                             |      |                 |                          |         |
|                             |      |                 |                          |         |
|                             |      |                 |                          |         |
|                             |      |                 |                          |         |
|                             |      |                 |                          |         |
|                             |      |                 |                          |         |
|                             |      |                 |                          |         |
|                             |      |                 |                          |         |
|                             |      |                 |                          |         |
|                             |      |                 |                          |         |
|                             |      |                 |                          |         |
|                             |      |                 |                          |         |
|                             |      |                 |                          |         |
|                             |      |                 |                          |         |
|                             |      |                 |                          |         |
|                             |      |                 |                          |         |
|                             |      |                 |                          |         |
|                             |      |                 |                          |         |
|                             |      |                 |                          |         |
|                             |      |                 |                          |         |

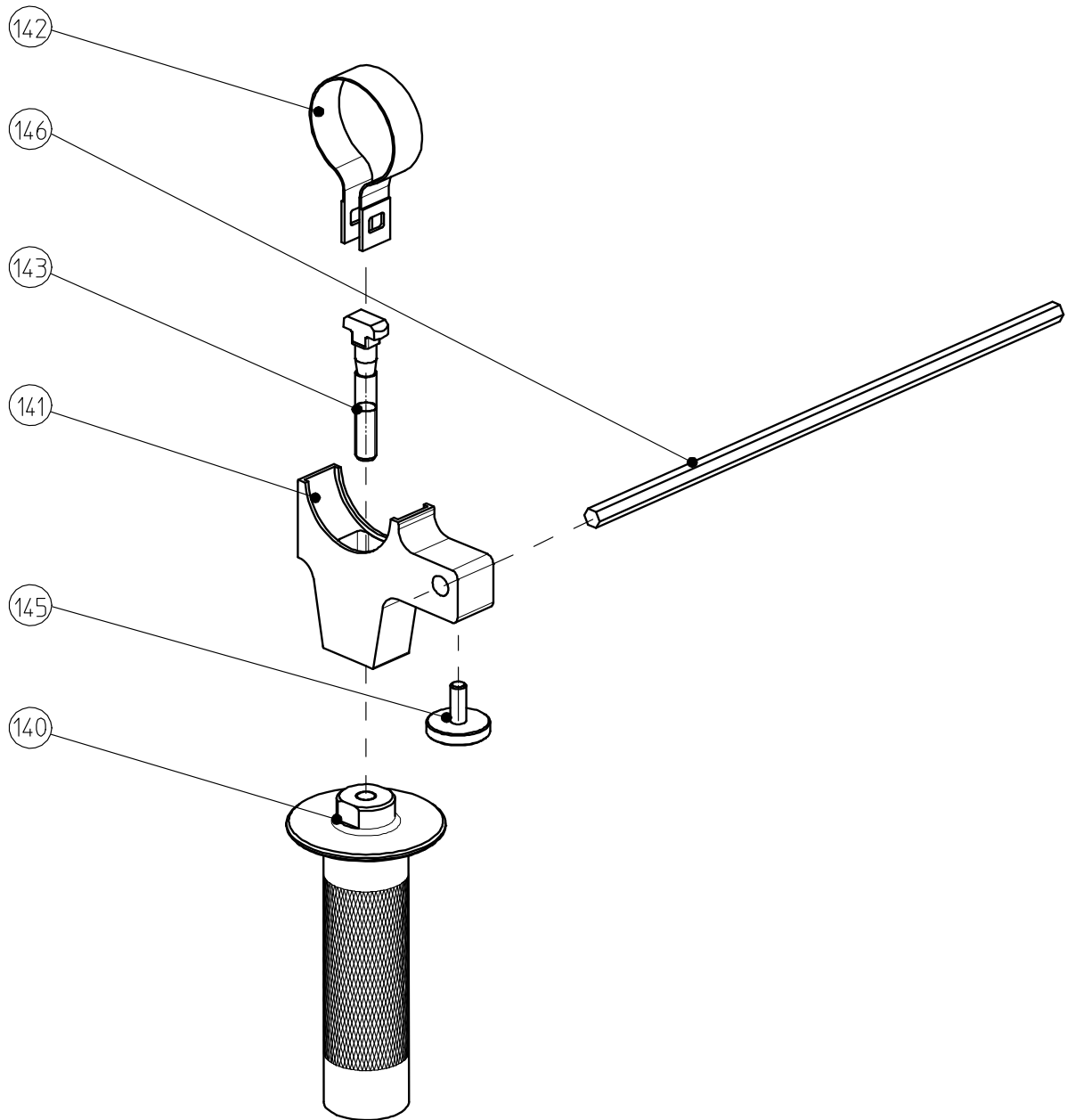
### Spare Parts List

Description:

**Second handle, assy.**

Part and drawing number:

**2 2408 6900**



**Spare Parts List**

Description:

**Cooling pipe, assy.**

Part and drawing number:

**2 2404 9200**

| Item | Qty. | Description          | Part and Drawing no. |  | Remarks |
|------|------|----------------------|----------------------|--|---------|
| 1    | 1    | Flushing pipe        | 2 2404 9210          |  |         |
| 2    | 1    | Reducing nipple      | 9 2203 0310          |  |         |
| 3    | 1    | Ball valve hexagonal | 9 2014 0900          |  |         |
| 4    | 1    | Gasket               | 9 2126 0100          |  |         |
| 5    | 1    | Hose nozzle          | 9 2109 0920          |  |         |
|      |      |                      |                      |  |         |
|      |      |                      |                      |  |         |
|      |      |                      |                      |  |         |
|      |      |                      |                      |  |         |
|      |      |                      |                      |  |         |
|      |      |                      |                      |  |         |
|      |      |                      |                      |  |         |
|      |      |                      |                      |  |         |
|      |      |                      |                      |  |         |
|      |      |                      |                      |  |         |
|      |      |                      |                      |  |         |
|      |      |                      |                      |  |         |
|      |      |                      |                      |  |         |
|      |      |                      |                      |  |         |
|      |      |                      |                      |  |         |
|      |      |                      |                      |  |         |
|      |      |                      |                      |  |         |
|      |      |                      |                      |  |         |
|      |      |                      |                      |  |         |

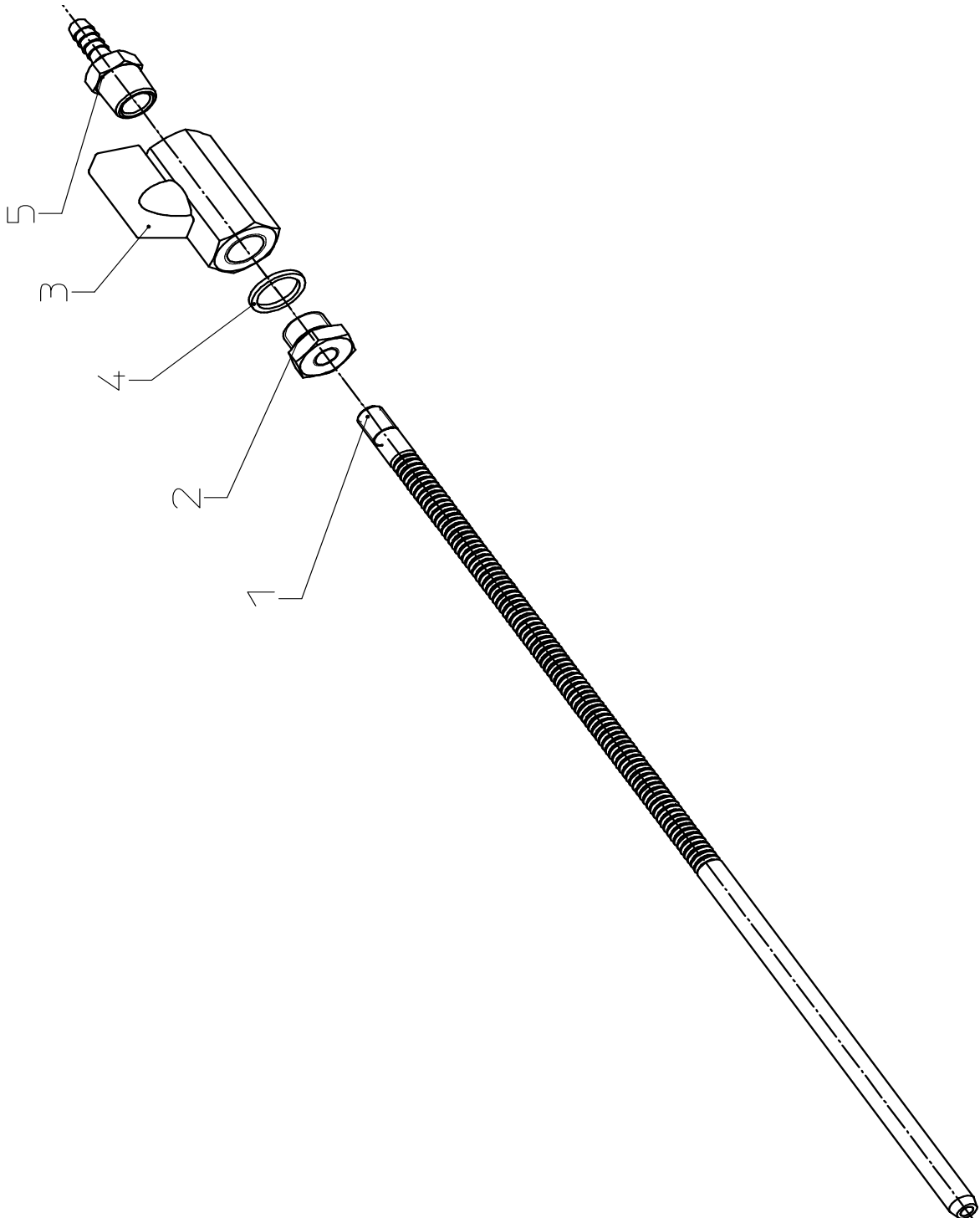
### Spare Parts List

Description:

**Cooling pipe, assy.**

Part and drawing number:

**2 2404 9200**



Note:



Maschinenfabrik GmbH  
Fellerstraße 4, 42555 Velbert  
Germany

Tel.: +49 2052 605 0  
Fax: +49 2052 605 29  
E-Mail: [spitznas@spitznas.de](mailto:spitznas@spitznas.de)  
Internet: [www.spitznas.de](http://www.spitznas.de)