

Pneumatic Band Saw Stainless Steel Type 5 6030 0010 Tech. Doc. No. 501



Illustration can differ from the original

Repair Manual and Spare Parts List

REPAIR INSTRUCTION

Disassembly and re-assembly should be done according to the sectional drawing only.

The pneumatic motor with the handle can be removed from the band saw head after loosening the fillister-head screws item 77.

Disassembly of motor/ replacement of vanes

Unlock locking ring item 13 and take out front motor component consisting of Belleville spring item 15 and shaft seal ring item 14.

Touch the motor housing item 1 softly to a wooden surface to pull out inner motor parts.

Pull off end plate item 10 with bearing item 11 and spacer item 5 from rotor item 8 and take out locking pin item 7.

Remove cylinder bushing item 6 and vanes item 9. Pull off end plate item 2 with bearing item 3 and spacer item 5 from rear rotor seat item 8. Unlock snap ring item 4 and disassemble bearing item 3. Through a second touch on a wooden surface the inlet plate item 2 and spacer item 5 will leave the motor housing item 1. Screw off silencer item 16.

Reassembly of motor

Reassembly is performed essentially the same as disassembly, but in reverse order. Inspect all parts for wear and damage. Replace any worn or damaged parts.

Vanes item 9 should be exchanged.

Vanes are considered worn if their width is less than 7.2 mm (3/8").

Disassembly of handle

Undo screw plug item 36. Remove spring item 34, ball item 33, seal item 31 and cylindrical pin item 32. Hit out double notched pin item 18 and remove pusher item 17.

Take out screw plug item 20, spring item 21 and locking bolt item 19.

Reassembly of handle

Reassembly is performed in reverse order.

Disassembly of band saw head

Undo screws item 12 and 42 and detach pulleys item 7 and 40 with tire pulleys.

After undoing screw item 47, detach washer item 48, needle bearing item 43 and washers item 44 and 45. Unscrew hexagonal nut item 72, and remove washer item 73. Undo hexagonal nut item 71 and screw out threaded pin item 70. Loosen screw item 32 and pull out tension sleeve item 31. Pull out tension shaft item 27 and knob item 28. Remove pin item 29 and separate knob item 28 from tension shaft item 27. After loosening hexagonal nuts item 75 pull out washers item 73 remove yoke item 30 as well as spring item 37 and washer item 33. Undo screws item 59 and 69 and remove stop item 74 and guid holder item 51 and 61.

Re-assembly of band saw head

Re-assembly is performed essentially the same as disassembly, but in reverse order.

Control function by moving pulleys item 7 and 40 before connecting the motor.

For disassembling the gearbox, remove the pulley item 7 by loosening the screws item 12.

Disassembly of the Gearbox

Pull off planet carrier item 9. Take out all gearbox stages and remove planetary wheels item 5, 8, 11 and needle bearings item 4, 7, 0. Take out bearing item 14. Remove snap rings item 15 and pull out bearing ring item 12 with second bearing item 14. Separate pinion item 20, 21 from planet carrier item 3, 6.

Reassembly of Gearbox

Reassembly is performed essentially the same as disassembly but in reverse order.

Add sufficient grease to gearbox.

Spare Parts

Only original spare parts may be used. There is no warranty for damages and liability is disclaimed, if non-original spare parts and accessories are used.

Spare Parts List					
Description:			Part and drawing number:		
Pneumatic Band Saw			5 6030 0010		
Item	Qty.	Description	Part and drawing no.		Remarks
	1	Pneumatic band saw 5 6030 0010			
		consisting of:			
1	1	Band saw standard equipment	5 6030 0000		see extra list
2	1	Handle	5 6011 6010		
3	2	Fillister-head screw	9 1112 3110		
4	1	Reducing nipple	9 2201 0010		

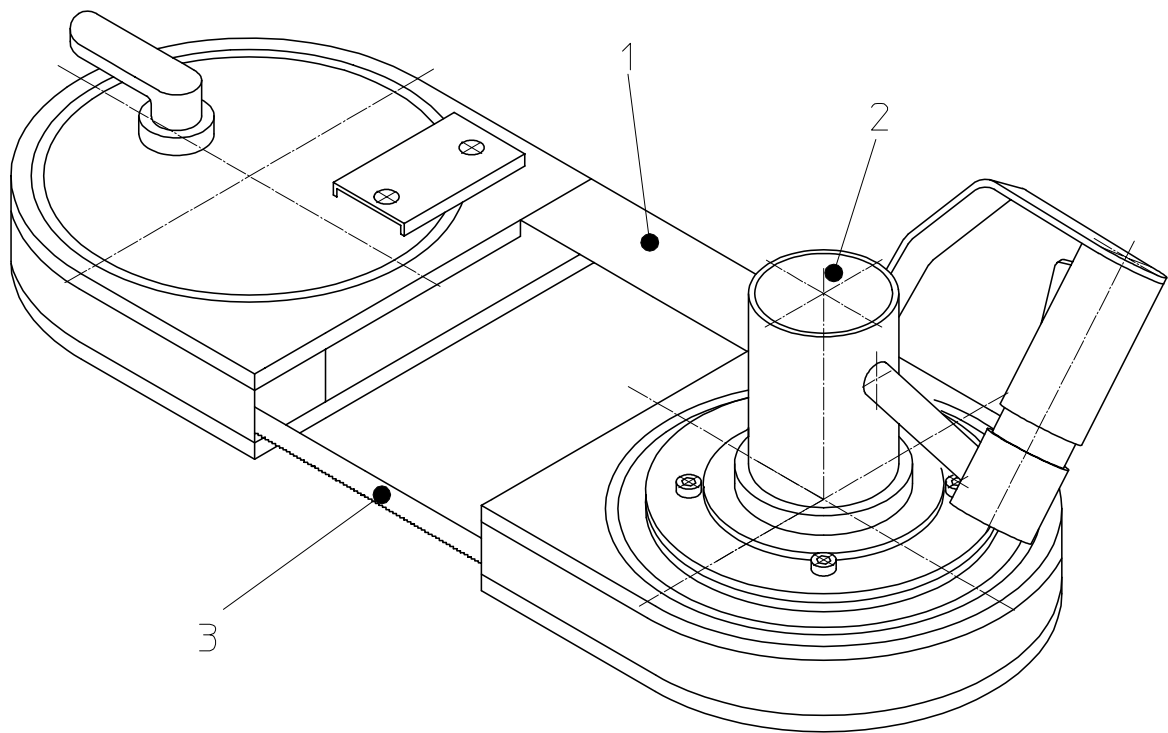
Spare Parts List

Description:

Band Saw Body

Part- and drawing number:

5 6030 0000



Spare Parts List

Description: <b style="text-align: center;">Band Saw Head	Part and drawing number: <b style="text-align: center;">5 6030 8000
--	--

Item	Qty.	Description	Part and drawing no.	Remarks
1	1	Frame Assy.	5 6030 7000	see extra list
2	1	Gearbox	5 6030 4000	see extra list
7	1	Drive pulley, Assy.	5 6030 8180	
		consisting of:		
	1	Drive pulley	5 6030 8080	
	1	Tire pulley	5 6030 8050	
12	3	Counter-sunk screw	9 1113 4070	
13	6	Stop washer	9 1714 0040	
27	1	Tension shaft	5 6030 8360	
28	1	Tension lever	5 6030 6210	
29	1	Brace	9 1630 0020	
30	1	Yoke	5 6003 7040	
31	1	Tension sleeve	5 6003 7060	
32	1	Fillister-head screw	9 1112 3110	
33	1	Pulley, Assy.	5 6030 7930	
	1	With pulley shaft	5 6030 7280	
36	2	Fillister-head screw	9 1112 5160	
37	2	Tension spring	9 1808 0240	
40	1	Drive pulley, Assy.	5 6030 8180	
		consisting of:		
	1	Drive pulley	5 6030 8080	
	1	Tire pulley	5 6030 8050	
41	1	Bearing ring	5 6030 8580	
42	3	Counter-sunk screw	9 1113 4080	
43	1	Needle bearing	9 1014 0330	
44	2	Washer	9 3333 0010	
45	1	Washer	9 3325 0870	

Spare Parts List

Description:		Part and drawing number	
Band Saw Head		5 6030 8000	

Item	Qty.	Description	Part and drawing no.	Remarks
47	1	Flat-head screw	9 1116 5020	
48	1	Washer	9 3325 0850	
50	1	Guide unit I	5 6030 7980	see extra list
58	2	Stop washer	9 3329 0010	
59	2	Fillister-head screw	9 1112 3110	
60	1	Guide unit II	5 6030 7990	see extra list
68	2	Stop washer	9 3329 0010	
69	2	Fillister-head screw	9 1112 3150	
70	1	Threaded pin	5 6030 8410	
71	1	Hexagonal nut	9 1203 0310	
72	1	Hexagonal nut	9 1210 0120	
73	3	Washer	9 3302 0020	
74	1	Work Stopp	5 6030 8100	
75	2	Hexagonal nut	9 1210 0030	
77	4	Fillister-head screw	9 1112 4100	

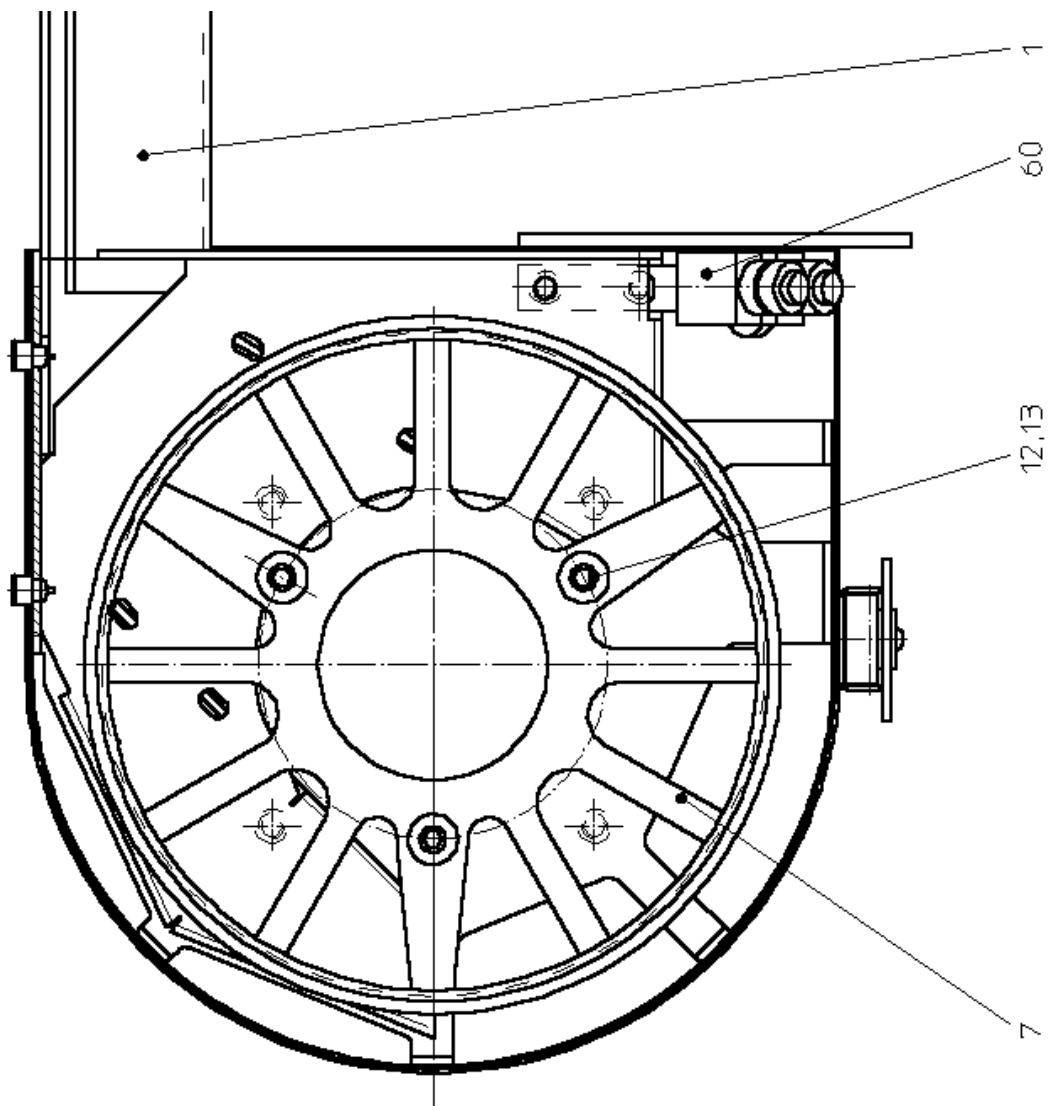
Spare Parts List

Description:

Band Saw Head

Part and drawing number:

5 6030 8000



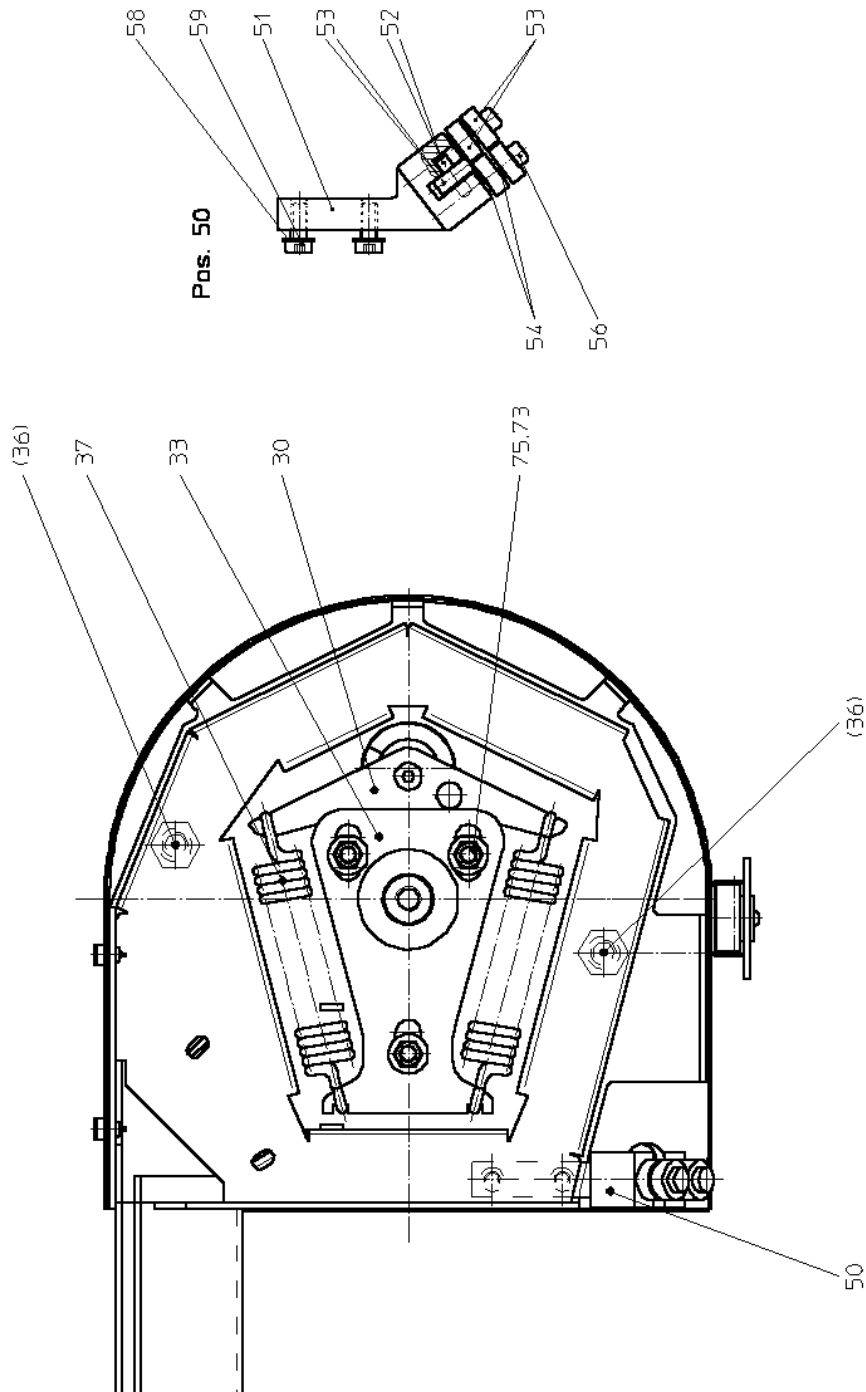
Spare Parts List

Description:

Band Saw Head

Part and drawing number:

5 6030 8000



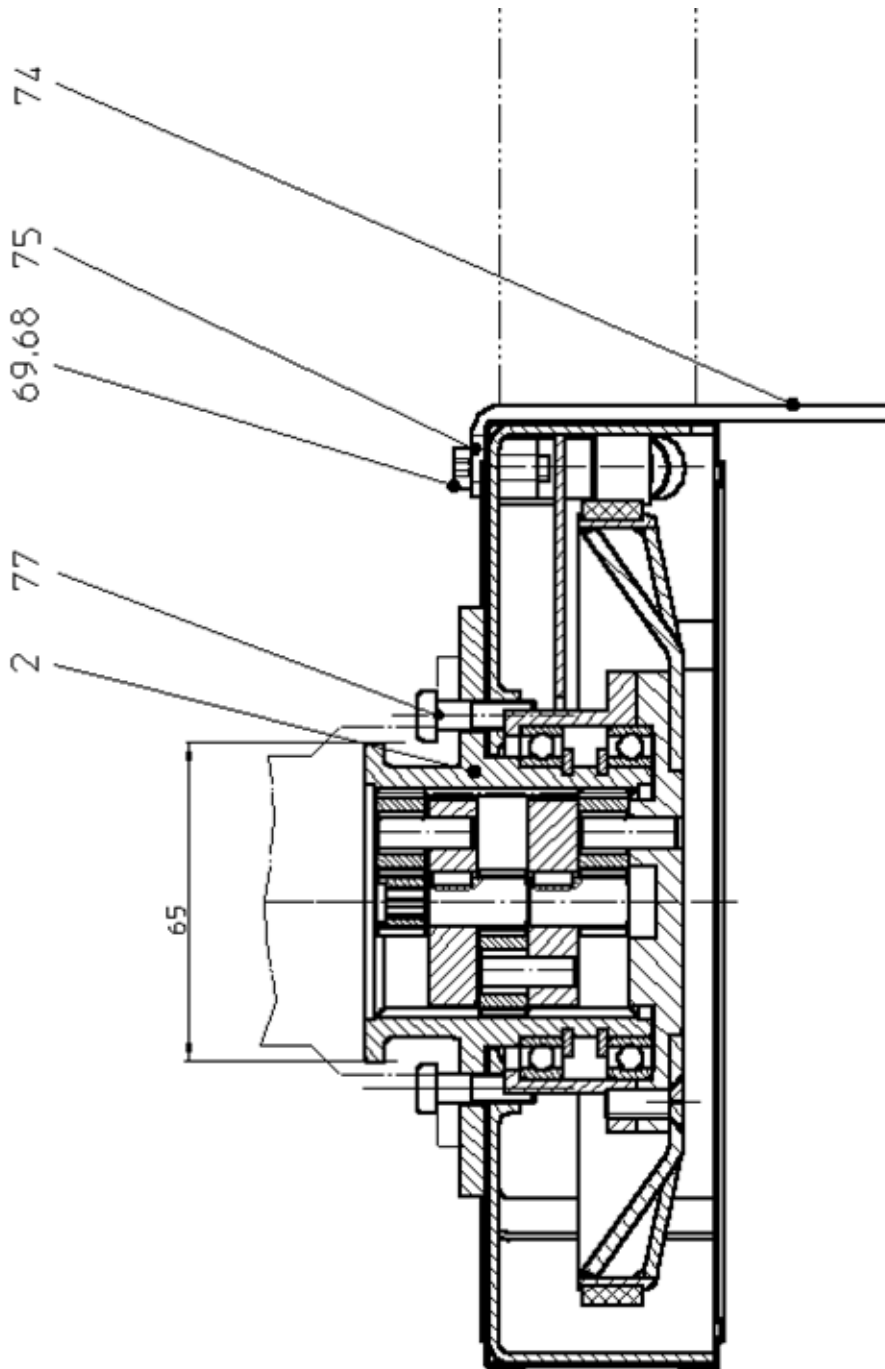
Spare Parts List

Description:

Band Saw Head

Part and drawing number:

5 6030 8000



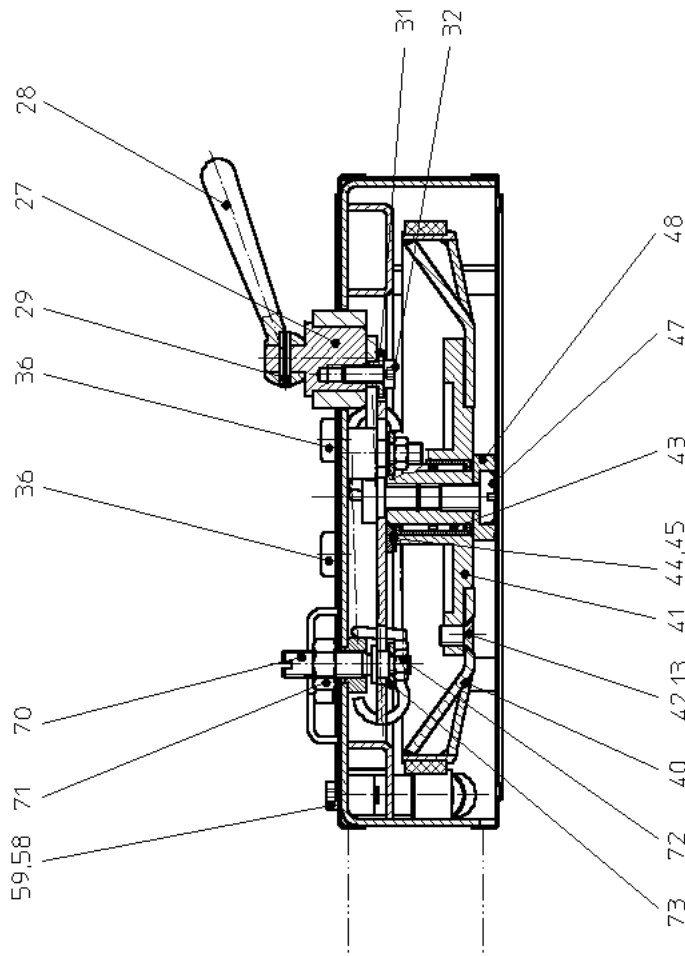
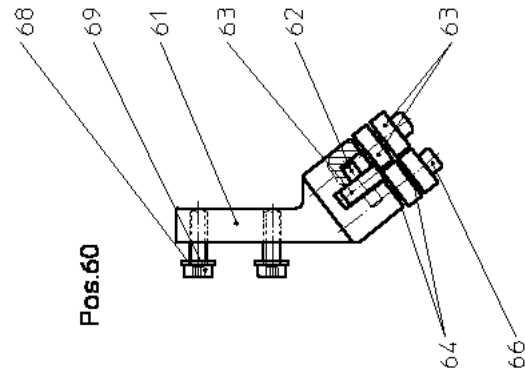
Spare Parts List

Description:

Band Saw Head

Part and drawing number:

5 6030 8000



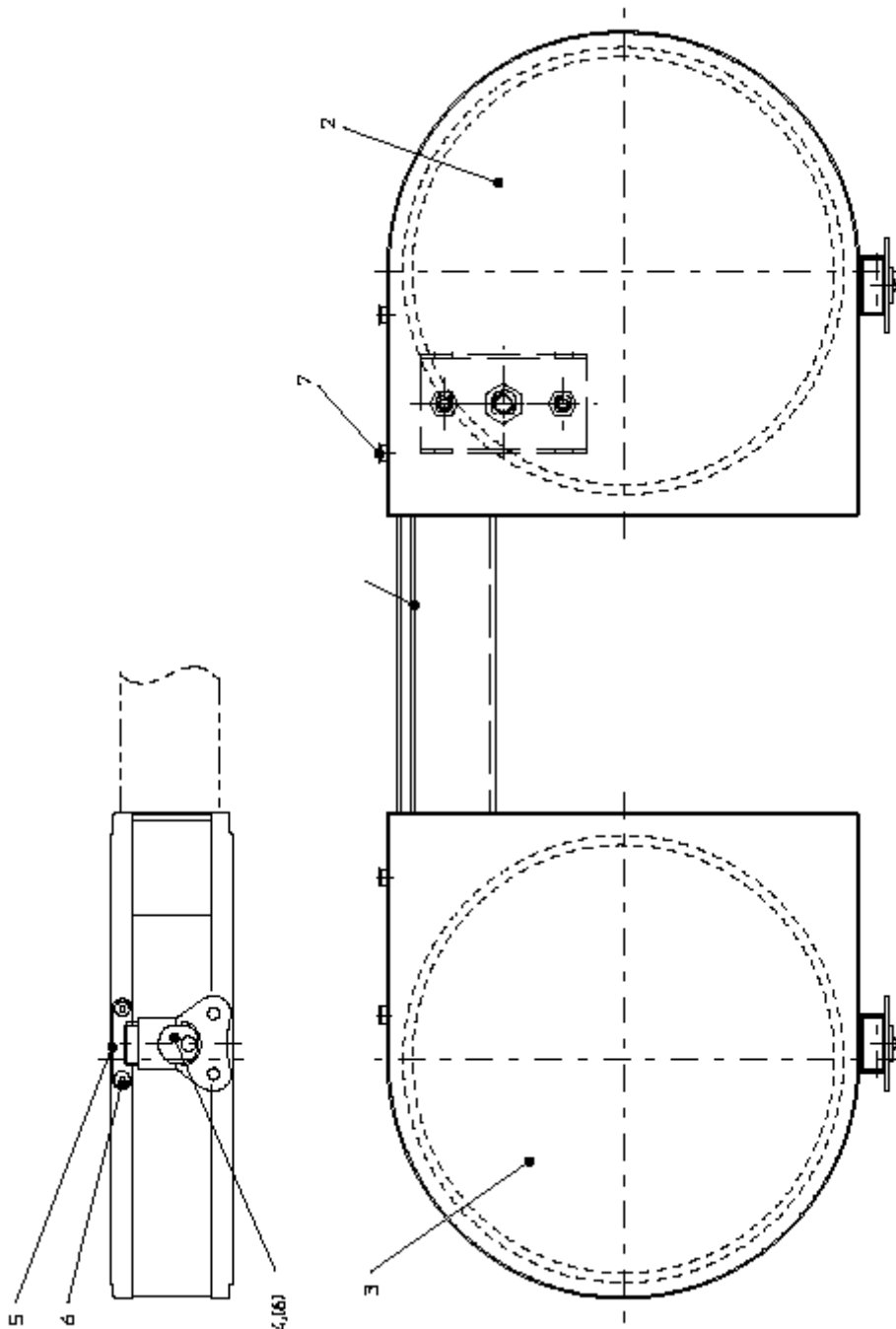
Spare Parts List

Description:

Band Saw Frame

Part and drawing number:

5 6030 7000



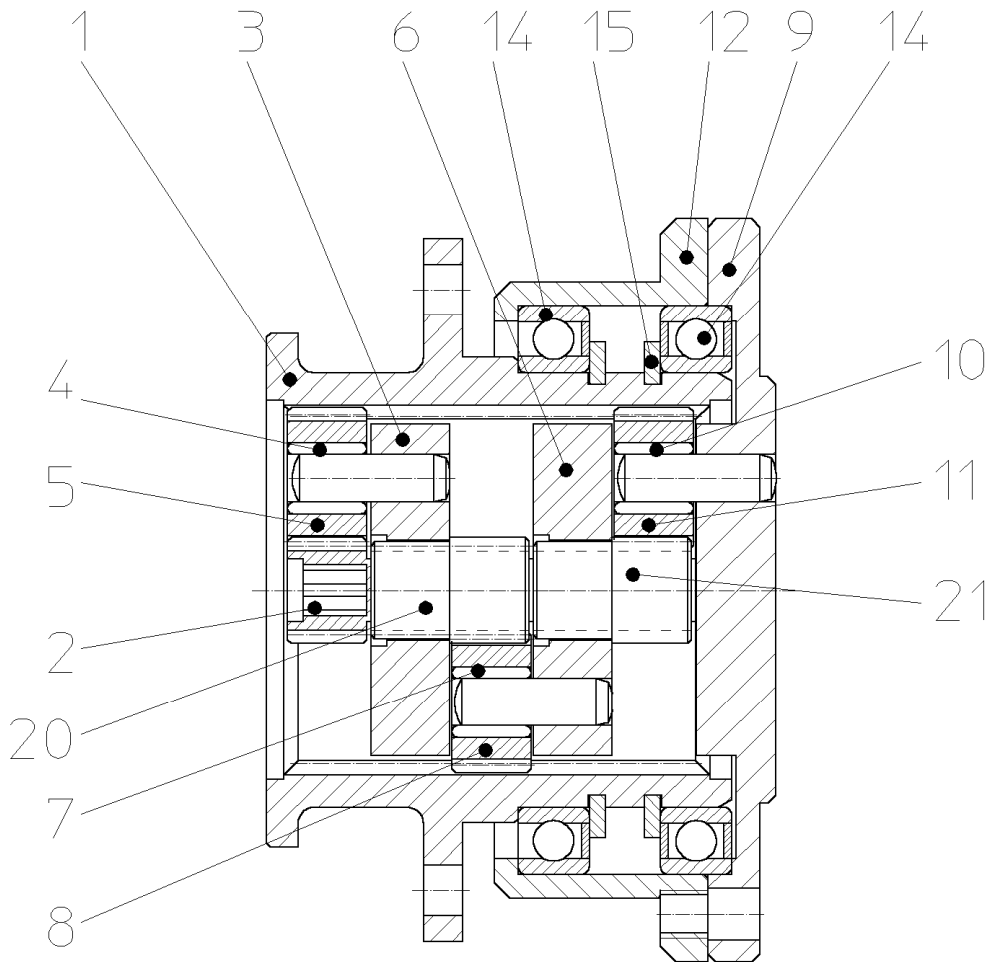
Spare Parts List

Description:

Gearbox

Part and drawing number:

5 6030 4000



Spare Parts List

Description: <b style="text-align: center;">Band Saw Motor	Part and drawing number: <b style="text-align: center;">5 6051 0020
---	--

Item	Qty.	Description	Part and drawing no.		Remarks
1	1	Motorhousing with handle	5 6051 1010		
2	1	End Plate	7 1403 1100	*	
3	1	Grooved ball bearing	9 1001 0460	*	
4	1	Snap ring	9 1703 0350		
5	2	Spacer	1 3801 1080		
6	1	Cylinder bushing	5 6050 1020	*	
7	1	Clamping sleeve	9 1630 0090		
8	1	Rotor	1 3802 1030		
9	5	Vane	3 7666 1050	*	
10	1	End plate	5 6057 1110	*	
11	1	Grooved ball bearing	9 1001 0120		
12	1	Snap ring	9 1703 0030		
13	1	Tension ring	5 6051 1160		
14	1	Sealing ring	9 1905 1220	*	
15	1	Belleville spring	9 1801 0320		
16	1	Sintered metal silencer	9 3801 1030		
17	1	Pusher	5 6011 3040		
18	1	Notched pin	9 1641 0020		
19	1	Lock bold	5 6011 3150		
20	1	Screw plug	9 1171 9240		
21	1	Compression spring	9 1803 3360		
	1	Valve insert cpl.	5 6036 6500		item 31-41
31	1	Sealing ring	9 1903 0160		
32	1	Cylindrical pin	9 1619 1360		
33	1	Ball	9 1017 0080		
34	1	Compression spring	9 1803 0250		
35	1	O-Ring	9 1901 3160	*	
36	1	Screw plug	5 6031 1580		
37	1	Valve lisert	5 6031 1570		
38	1	Guiding	5 6031 1590		
39	2	Set screw	9 1146 2010		
40	2	O-Ring	9 1901 5880	*	
41	1	Snap ring	9 1703 0110		
		*Wear parts to be stored in case of continuous			
		use			

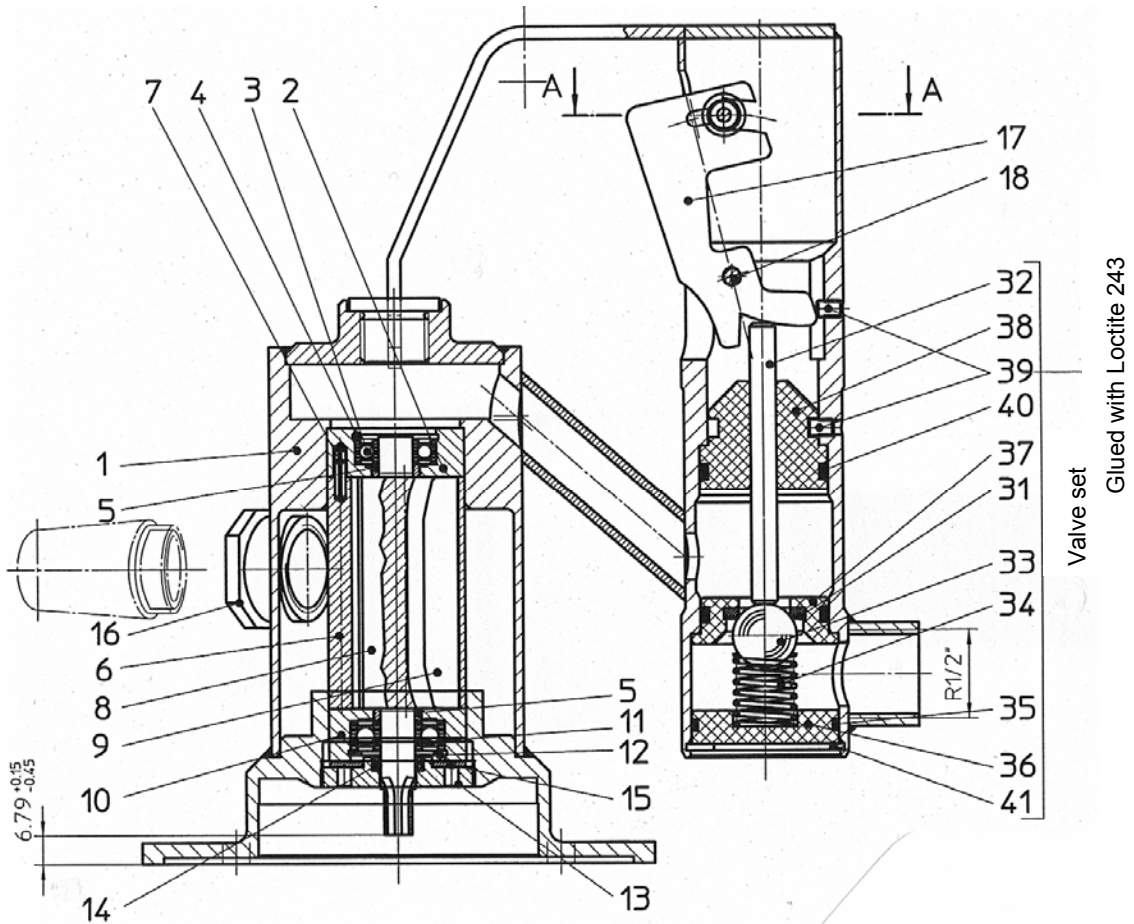
Spare Parts List

Description:

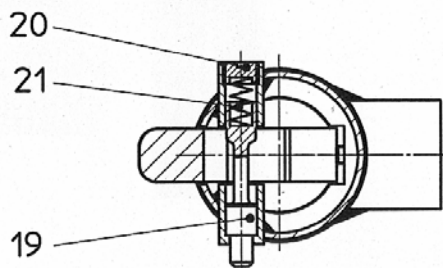
Band Saw Motor

Part and drawing number:

5 6051 0020



A-A 1:1



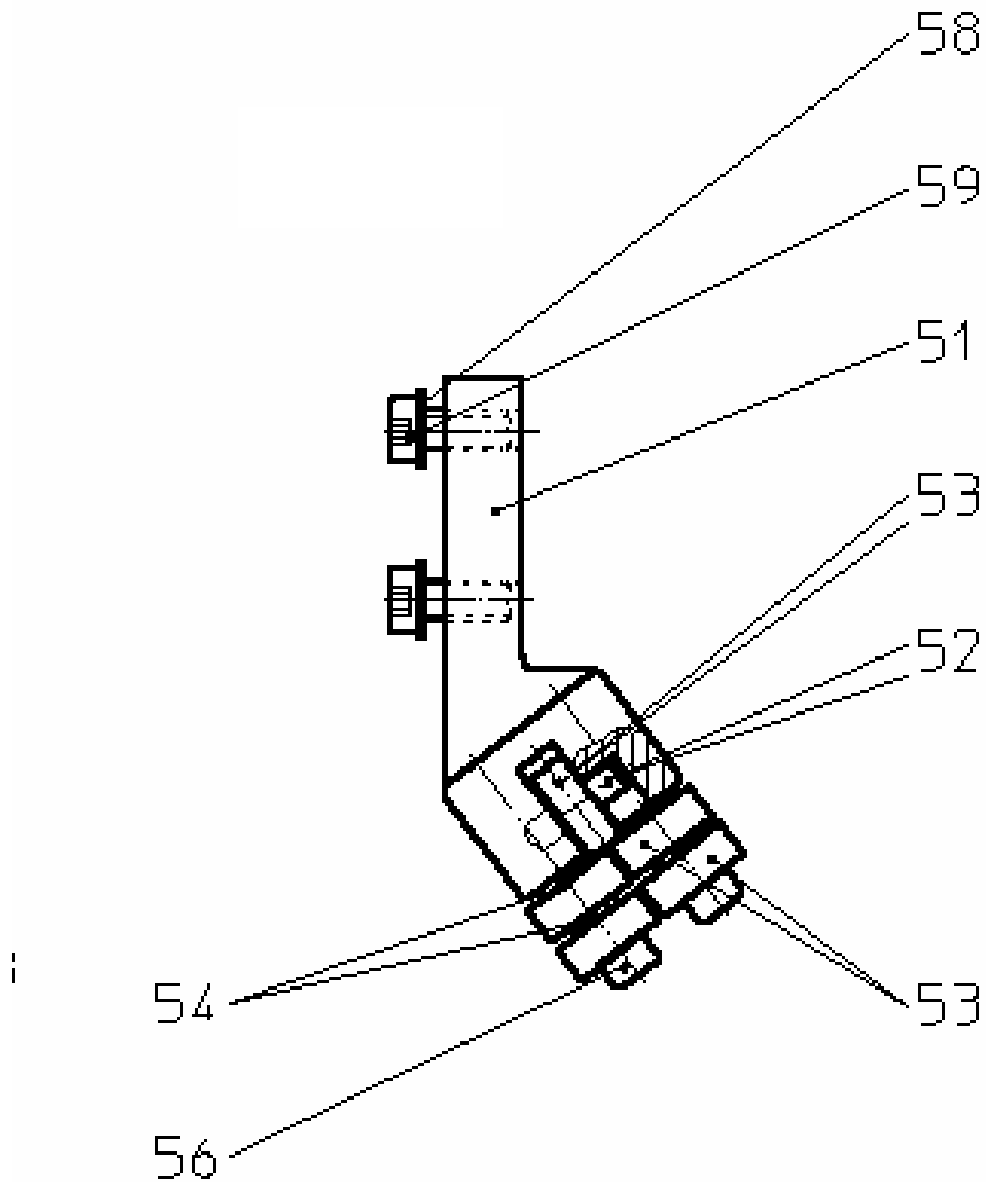
Spare Parts List

Description:

Guide Unit I

Part and drawing number:

5 6030 7980



Spare Parts List

Description:

Guide Unit II

Part and drawing number:

5 6030 7990

